



# NOLAND ROAD RETAIL/OFFICE SPACE

13912 E. Noland Court, Independence, Missouri



**LEASE RATE: \$750/MONTH | 960 SF SPACES**

### DEMOGRAPHICS

	1 mile	3 miles	5 miles
Estimated Population	9,427	79,897	157,703
Avg. Household Income	\$90,066	\$76,849	\$81,791

- Next to new Social Security building
- Across from new Walmart Neighborhood Market
- Heavy traffic and retail trade area
- Plenty of parking
- Below market rates

 [CLICK HERE TO VIEW MORE LISTING INFORMATION](#)

For More Information Contact: *Exclusive Agent*  
BILL MAAS | 816.412.7392 | [bmaas@blockandco.com](mailto:bmaas@blockandco.com)

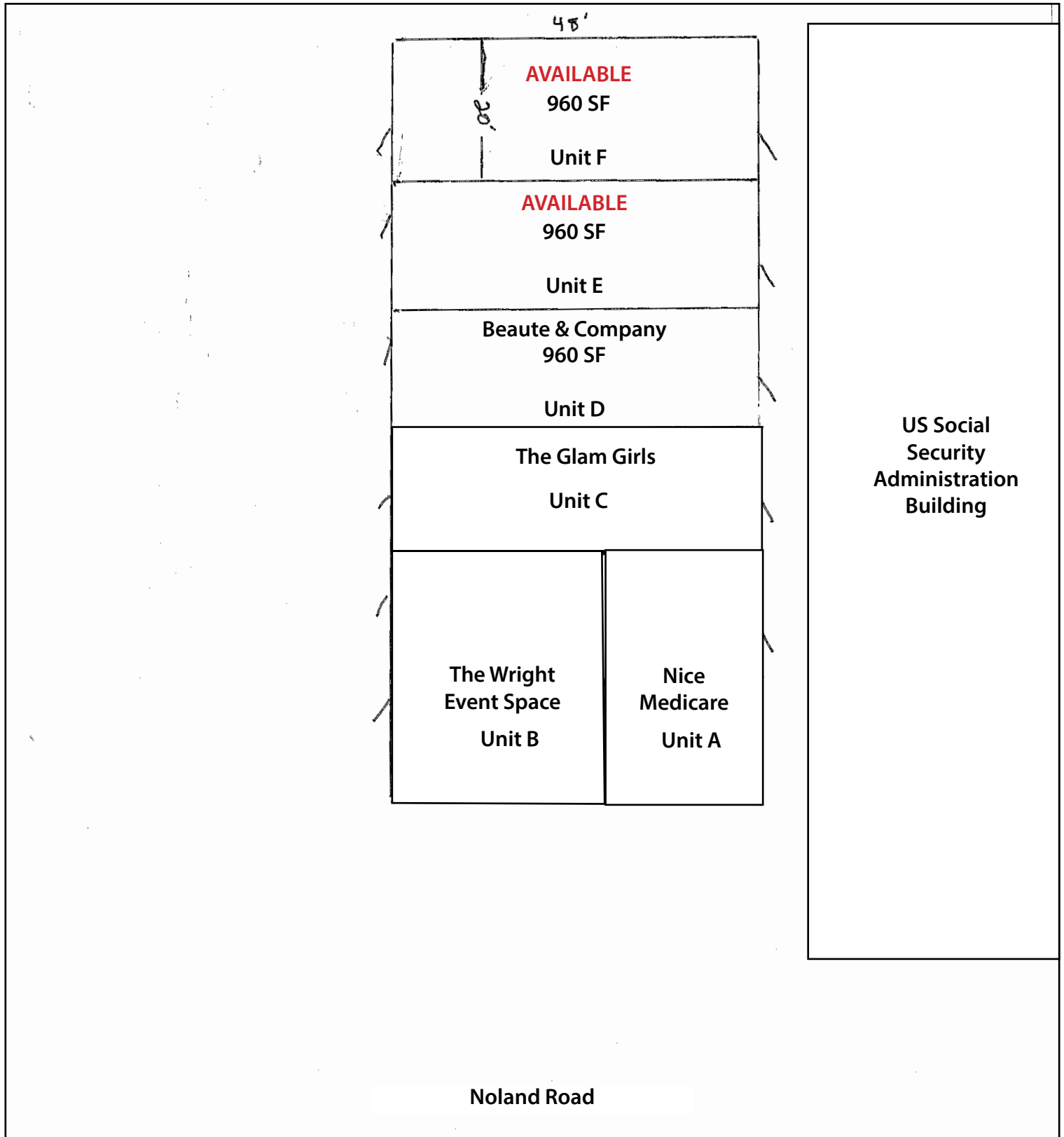




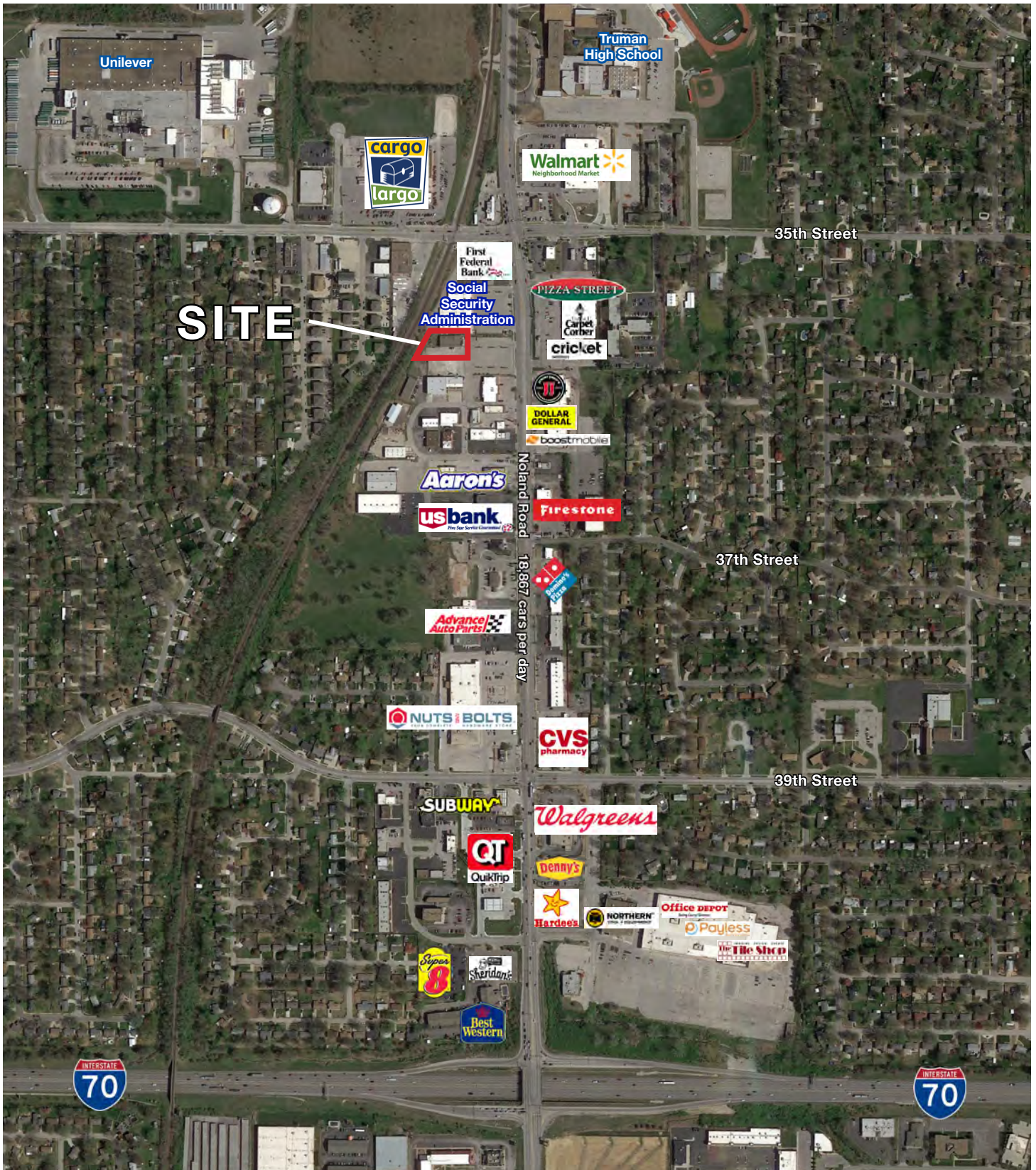
# NOLAND ROAD RETAIL/OFFICE SPACE

13912 E. Noland Court, Independence, Missouri

## SITE PLAN

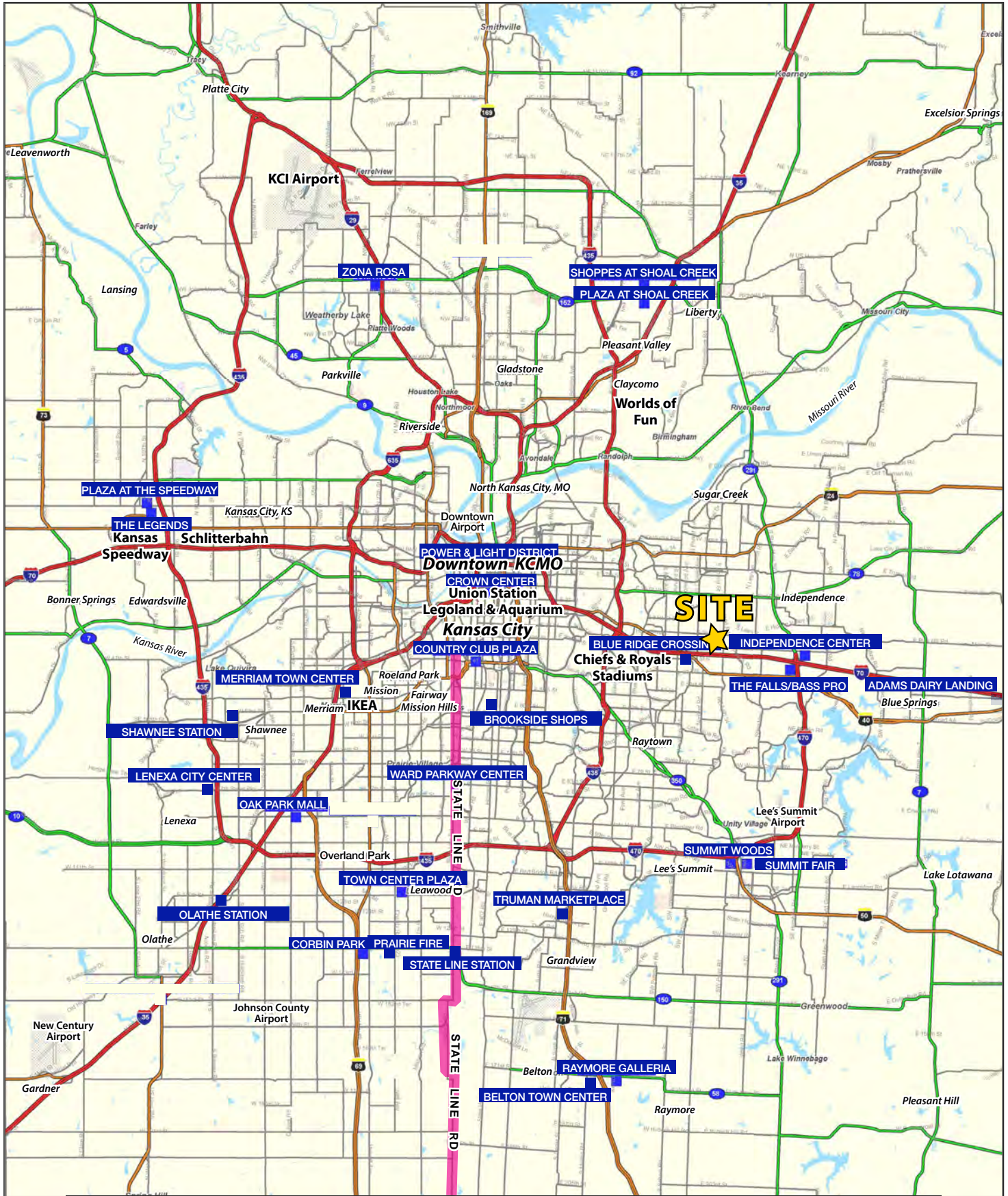


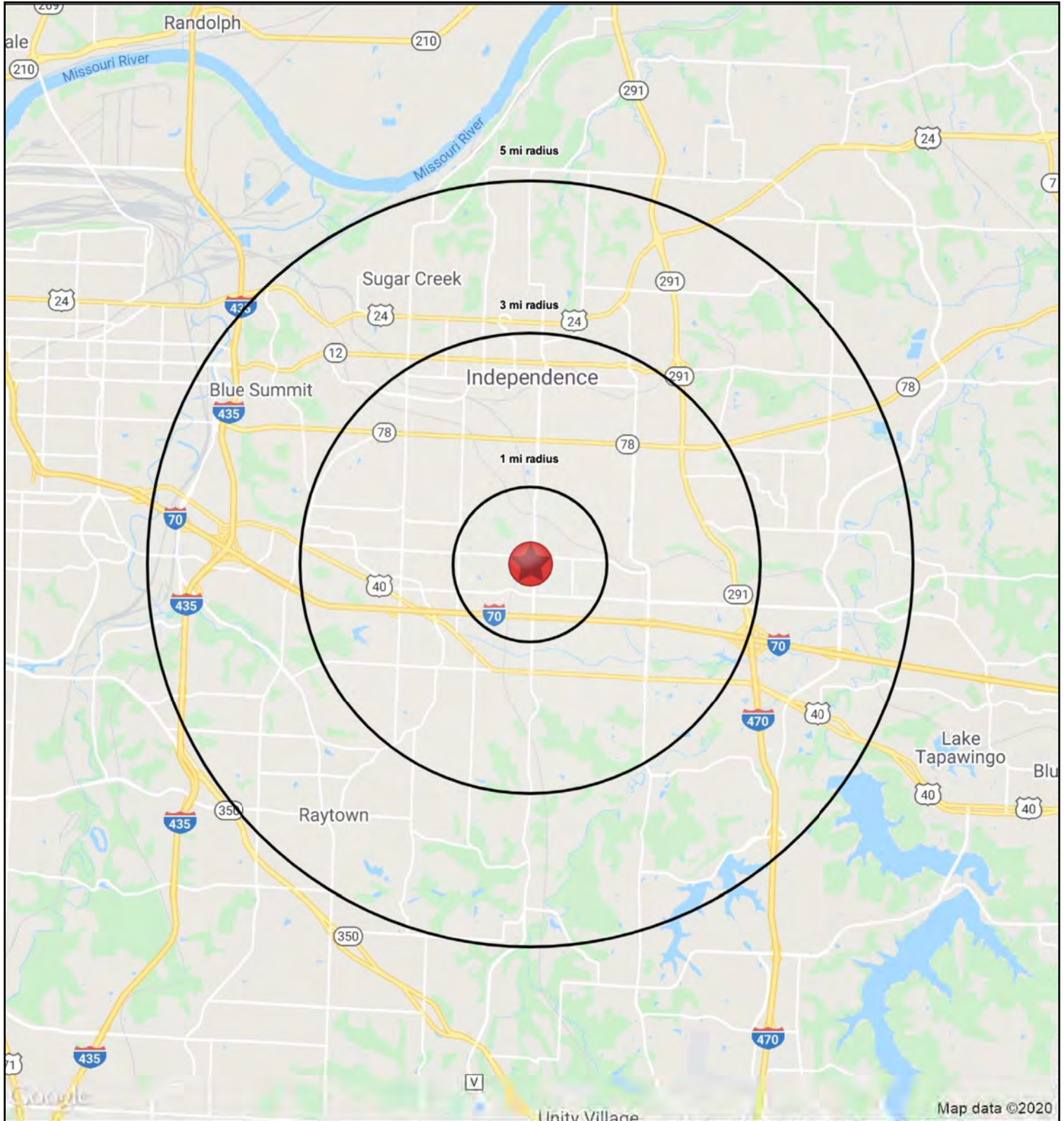
## AERIAL



# NOLAND ROAD RETAIL/OFFICE SPACE

13912 E. Noland Court, Independence, Missouri







# NOLAND ROAD RETAIL/OFFICE SPACE

## 13912 E. Noland Court, Independence, Missouri

13912 E Noland Ct Independence, MO 64055	1 mi radius	3 mi radius	5 mi radius
<b>Population</b>			
2023 Estimated Population	9,427	79,897	157,703
2028 Projected Population	9,285	80,995	160,365
2020 Census Population	9,394	79,916	157,140
2010 Census Population	8,724	76,604	151,286
Projected Annual Growth 2023 to 2028	-0.3%	0.3%	0.3%
Historical Annual Growth 2010 to 2023	0.6%	0.3%	0.3%
2023 Median Age	42.5	40.2	39.4
<b>Households</b>			
2023 Estimated Households	4,057	34,781	67,356
2028 Projected Households	3,945	34,772	67,566
2020 Census Households	3,994	34,402	66,331
2010 Census Households	3,722	33,069	63,532
Projected Annual Growth 2023 to 2028	-0.6%	-	-
Historical Annual Growth 2010 to 2023	0.7%	0.4%	0.5%
<b>Race and Ethnicity</b>			
2023 Estimated White	75.3%	70.7%	69.4%
2023 Estimated Black or African American	10.9%	16.1%	17.5%
2023 Estimated Asian or Pacific Islander	1.8%	1.7%	1.6%
2023 Estimated American Indian or Native Alaskan	0.6%	0.5%	0.5%
2023 Estimated Other Races	11.5%	11.1%	11.1%
2023 Estimated Hispanic	11.2%	11.0%	10.7%
<b>Income</b>			
2023 Estimated Average Household Income	\$90,066	\$76,849	\$81,791
2023 Estimated Median Household Income	\$69,100	\$59,944	\$61,659
2023 Estimated Per Capita Income	\$38,783	\$33,554	\$35,026
<b>Education (Age 25+)</b>			
2023 Estimated Elementary (Grade Level 0 to 8)	2.3%	2.4%	2.3%
2023 Estimated Some High School (Grade Level 9 to 11)	4.5%	5.6%	6.7%
2023 Estimated High School Graduate	37.5%	35.9%	35.2%
2023 Estimated Some College	24.9%	24.9%	24.5%
2023 Estimated Associates Degree Only	7.9%	8.1%	8.3%
2023 Estimated Bachelors Degree Only	12.9%	15.0%	14.9%
2023 Estimated Graduate Degree	10.1%	8.2%	8.1%
<b>Business</b>			
2023 Estimated Total Businesses	331	2,493	4,887
2023 Estimated Total Employees	2,672	19,904	46,803
2023 Estimated Employee Population per Business	8.1	8.0	9.6
2023 Estimated Residential Population per Business	28.5	32.0	32.3

©2023, Sites USA, Chandler, Arizona, 480-491-1112 Demographic Source: Applied Geographic Solutions 4/2023, TIGER Geography - RS1



